

# The Prospector

Portland Gold Prospectors, Inc.

GPA Portland, Oregon Chapter



December, 2024

## President's Corner

December 2024

Well prospectors, it's been a great year. I am so glad I jumped in and volunteered to lead the club for 2024. My term is up at the end of the December meeting. I really appreciated the interest from everyone who signed up for the nominations. I think we are set to have an active 2025. I also want to thank everyone for all the help and support... and please continue and let's carry it forward. I'm going to look for ways to help out and improve all the functions I'm involved with going forward. I also hope to plan a few events and programs.

So, we'll have our election at the December meeting and have our \$5 raffle... we will also sell tickets for the \$10 raffle and draw for those prizes at the end of the meeting. Remember that the winner gets a choice of the prizes. Be sure to bring your tickets... and buy some more!

See you there.

*John Mink*



Gold (Crystallized Nugget)

near Ballarat, Victoria, Australia

Small Cabinet, 7.4 x 4.4 x 2.3 cm

Ex. Lawrence H. Conklin

This hefty gold nugget, weighing in at just over 150 grams (approx 5 troy ounces), is a crystallized nugget of a sort rarely seen in good, aesthetic specimens. It has, as you can see, a "tortured," elongated crystal rope curving up from the main nugget mass. Such pieces are seldom found, and this would be considered a large "rope gold" crystal by any standard. The piece has a beautiful slightly copper or brassy patina, a little darker than normal Aussie nuggets from the more common Victoria locales. It was long in the Ed David Collection until the mid-90s, after which it was in the collection of collector/dealer Lawrence Conklin.

Reprinted from

<https://www.irocks.com/minerals/specimen/8597>

under copyright fair usage for editorial use.

---

## From Jessyca:

If your company does matching donations to clubs for the holidays. We have donation forms and I can provide any info needed at the next club meeting.

---

## From the Editor:

I've been producing the newsletter for seven years and it's time for me to pass it on to someone else. If you're interested please contact me via my email: [wrshpmzshn@gmail.com](mailto:wrshpmzshn@gmail.com)

# Portland Gold Prospectors, Inc. Secretary's Report November 17, 2024

Eastridge Church  
14100 SE Sunnyside Rd.  
Clackamas, Oregon 97015

## 2024 Portland Gold Prospectors Board of Directors

### President:

John Mink 971-303-6677  
minkjem1@gmail.com

### Vice President:

Mark Kirk  
mvkirk@frontier.com

### Treasurer:

Jessyca Harman  
jessycaharman@gmail.com

### Secretary:

Yolande Kragerud  
YKragerud@yahoo.com

### 2 Year Board Members:

Kelly Huffman 503-688-3544  
huffy54.outlook.com  
Charlie Foster 503-630-7669  
fostercr@rconnects.com  
Dan Rouse 503-730-6737  
dan\_rouse@msn.com

### 1 Year Board Members:

Rocky Tester Samuel Garcia  
Jim Erwin Ken Didier

### Board Members at Large

Larry Sharp Gene Howard

### Library:

Steve Kragerud 503-775-0886  
ykragerud@yahoo.com

### Raffle:

Joe Weber 503-572-0499  
Joeweb001@yahoo.com

### Claims

Jerry Johns 503-686-9422  
jerryjohns@gmail.com

### Newsletter and Website:

Tim Snyder 503-481-1133  
WrshpMzshn@gmail.com

**Meeting** was called to order at 1:30 P.M. by President John Mink who also led the Pledge of Allegiance.

**Attendees** - 47 attendees and 4 guests were present.

**Meeting Minutes** - A motion was made and seconded to accept the Secretary's Report of the previous month as written and published in the November newsletter.

**Treasury Report** - A motion was made and seconded to accept the Treasury Report that Jessyca read for the month of November.

**\$10 Raffle** - We are still selling tickets for our 3 month Raffle. We will have the drawing at the end of next months meeting so if you haven't bought any yet you better now because time is running out for chances to win these awesome prizes.

**Prospector's Treasure Trove** - Dan brought it to our attention that Gold is down about \$200 an ounce for the first time in awhile. He invited everyone to come to his shop on Black Saturday for a get together. He will be providing pulled pork sandwiches and pie for everyone. It will be a great time to do some Christmas shopping especially because he will be having good deals on Metal Detectors and other stuff. This event will be all day until 5:00 P.M. Dan has recently got 2 claims that he has 90 days to file for them with the BLM in Lane County. They are located about 2 1/2 hours south of Portland. There are 3 different campsites there and only sluicing is allowed. This will be nice for our club because it won't be that far away.

**Nominations** - We did nominations for our Election next month. Luckily we had some people show interest in the positions of President, Treasurer and Board Members. For President we have Dan Rouse. For Treasurer we have Ken Didier, Jeff Cronn and John Ashcraft. We also have Rocky Tester, Jim Erwin, Sam Garcia, Jeff Cronn, Waymon Bonner, Jerry Newbert, Peter Frederick, Wayne Marsonette and John Ashcraft who would like to be Board Members.

**\$5 Raffle** - A lady won the Gold Nugget unfortunately I didn't get her name. The meeting was adjourned at 2:40 P.M.

Respectfully submitted by Yolande Kragerud, Secretary.





## The Landmark - November 24, 2024

[www.mylandmatters.org](http://www.mylandmatters.org)

### LIDAR!

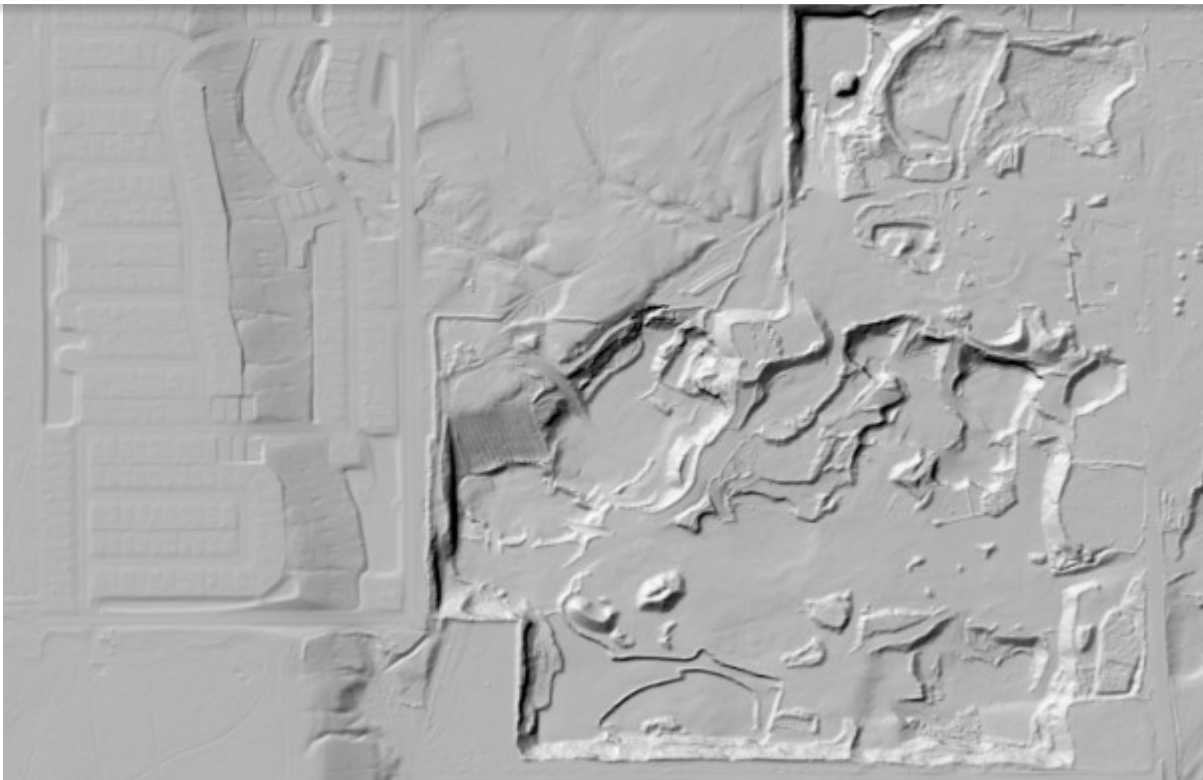
Light Detection and Ranging

With our recent web server upgrade we are now able to include the much requested LIDAR base maps on all our US maps. Several of the existing base map layers are being removed or made unavailable by the government but our recent server upgrade will allow us to replace those missing base layers with hopefully more interesting and useful base map layers.

LIDAR has the ability to eliminate most vegetation and unwanted surface features to "see" the shape of the ground. This can be quite helpful when trying to find old buildings, walls and earthworks. This map layer is particularly useful for historical researchers. The LIDAR base map layer is available on all our U.S. based maps.

Not all "LIDAR" is equal this is the most up to date elevation mapping available however there are several different sources for the map data. Only areas near urban areas or government projects are going to have high definition modelling. Here is an example of the differences in quality you will encounter when using this map layer.

Here is a location in Phoenix Arizona. The sand and gravel operation in the river bottom is well detailed and the housing nearby shows walls and roads quite well.



Here is a location just two miles from the previous LIDAR image. Both this and the previous image are taken at the same zoom level. This is in a regional mountain park and is typical of the resolution you will see in most of rural United States. Still useful but not nearly as detailed as the urban LIDAR above.

Here is a location just two miles from the previous LIDAR image. Both this and the previous image are taken at the same zoom level. This is in a regional mountain park and is typical of the resolution you will see in most of rural United States. Still useful but not nearly as detailed as the urban LIDAR above.



#### December 2024 NUGGET NEWS!

Hope this finds you well on your way in finishing your Christmas preparations. Mary and I are now in San Antonio Texas and should be home in time for our Christmas Potluck on December 15th at the Eagles in Hayden. Setup is at noon with dinner and gift exchange from 1pm to 5pm. Please plan to attend. Details are on page 1 of the Dec 24 issue of the Nugget News. Here's to wishing all of you a VERY MERRY CHRISTMAS AND A HAPPY AND PROPEROUS NEW YEAR!

Bob Lowe  
Nugget News Editor

To download the latest issue of NW Gold Prospectors' Nugget News, click here:

<https://nwgoldprospectors.org/nugget-news>

The new **Washington Gold and Fish** pamphlet is now available. You must have it with you whenever you prospect in the state of Washington.

Download a copy to print here: <https://wdfw.wa.gov/licenses/environmental/hpa/types/prospecting>



## Sponsors and Member Businesses



**PROSPECTOR'S  
TREASURE TROVE**

10400 SW ALLEN BLVD, BEAVERTON, OREGON  
DAN ROUSE | 971-708-8699 | WWW.PROSPECTORSTREASURE.COM



**Menziesii Metals**  
Jewelry & metalwork  
**Cindy Wright**  
West Linn, Oregon  
503.701.3073  
Etsy; MenziesiiMetals



**SUMMIT  
TRAILER**

Greg Swanson  
greg@summittraileremfg.com 503-804-8239

4530 NE 148TH AVE  
PORTLAND, OR 97230 971-279-2176

971-279-2006 summittraileremfg.com